



Unusual presentations of papulonecrotic tuberculid - Report of two cases

Molisha Bhandari¹, Prashant Verma¹, Geeti Khullar¹, Shruti Sharma²

¹Department of Dermatology, Vardhman Mahavir Medical College and Safdarjung Hospital, New Delhi, ²National Institute of Pathology, ICMR

Poster ID : 19

Introduction

➤ Papulonecrotic tuberculid is a cutaneous hypersensitivity reaction to hematogenous dissemination of *Mycobacterium tuberculosis*

➤ It is a relatively uncommon tuberculid

Case report

CASE 1: 23-year-old man with multiple asymptomatic crusted papules and plaques on bilateral upper limbs, lower limbs and trunk x 5 months

➤ History of pulmonary tuberculosis in father 2 years ago

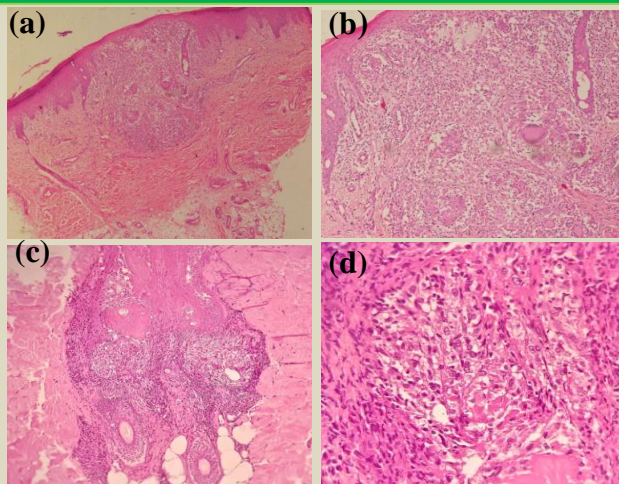
➤ No systemic complaints

CASE 2: 12-year-old female with asymptomatic papules on bilateral palms and soles x 3 months with history of intermittent fever and expectorant cough for past 1 month



CASE 1 (a) Multiple erythematous crusted papules and plaques on trunk with some of them healing with varioliform scarring, **CASE 2 (b)** Crusted papules on the sole of foot, **(c)** Crusted papules on bilateral palms and fingertips

Histopathologic findings



(a) Epidermis acanthotic with focal thinning in the centre and beneath the atrophic epidermis, epithelioid cell granuloma present (H&E, x40), **(b)** Epithelioid cell granuloma consisting of lympho-histiocytes with multinucleated giant cells present in upper dermis (H&E, x100),

(c) Pilosebaceous unit infiltrated by multiple epithelioid cells. A large area of necrotic hair follicle at the top (H&E, x200), **(d)** Dermal epithelioid cell granuloma with areas of necrosis and surrounded by lymphocytes and histiocytes (H&E, x400)

Other Investigations

Investigation	Case 1	Case 2
Tissue culture for <i>Mycobacterium tuberculosis</i>	Negative	Negative
Mantoux test	30x30 mm	25x30 mm
Sputum for AFB	Negative	Negative
Chest X-ray	NAD	NAD
USG abdomen	NAD	Mild ascites
CT chest & abdomen	NAD	Pleural effusion and ileitis

Discussion

- ❑ Unusual features in our cases were
 - Case 1 had generalized involvement
 - Case 2 showed localised palmo-plantar involvement with pulmonary and abdominal tuberculosis

Reference

Jordaan HF, Van Niekerk DJ, Louw M. Papulonecrotic tuberculid. A clinical, histopathological, and immunohistochemical study of 15 patients. Am J Dermatopathol. 1994;16:474-485.